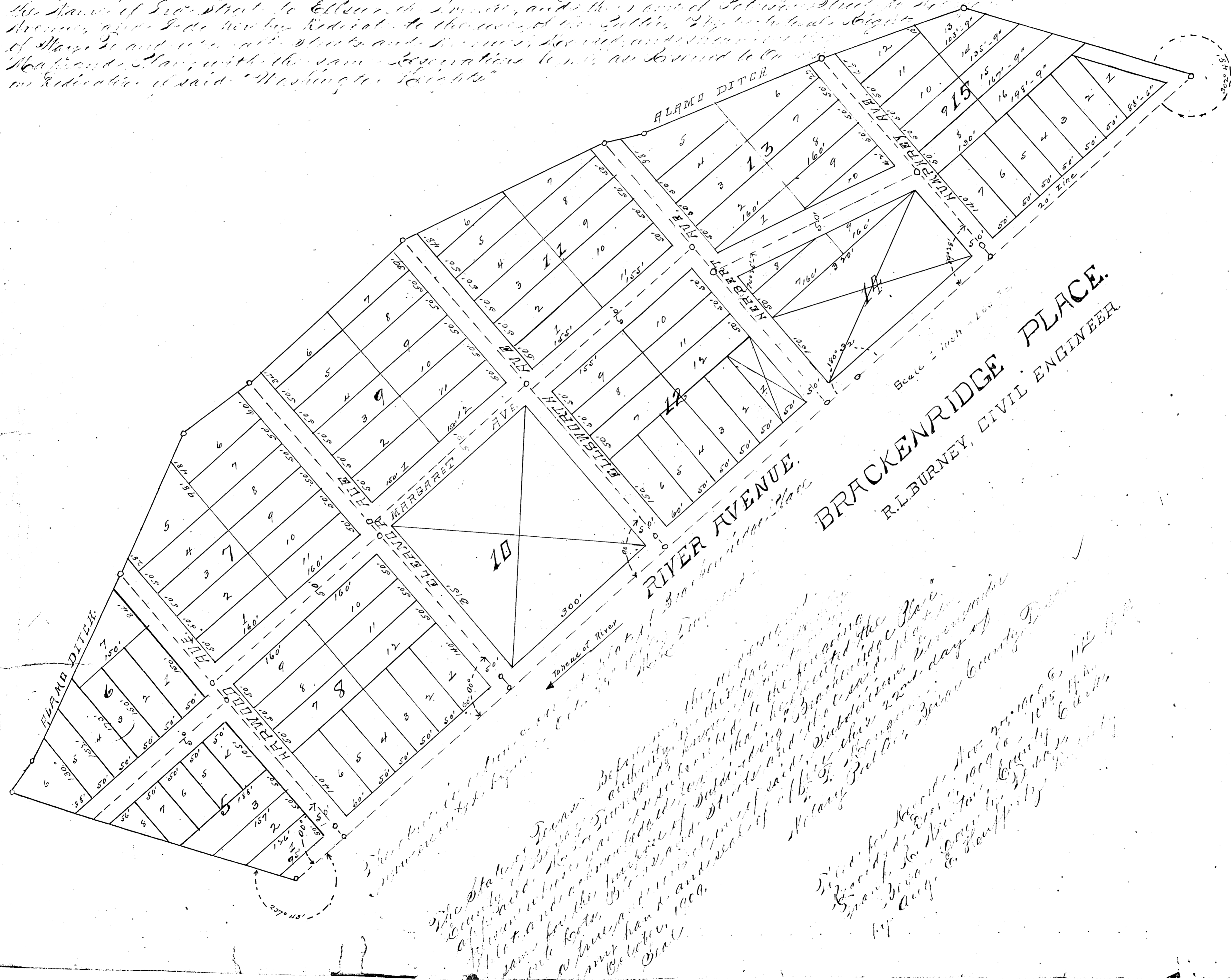


State of Texas, County of Bexar, City of San Antonio, at the Board of Commissioners and Councils of said City of San Antonio, this 22nd day of March, 1909, the said Board of Commissioners and Councils of said City of San Antonio, do hereby certify that the following is a true and correct copy of the original plat as the same appears on file in the office of the City Engineer of said City of San Antonio, to-wit:

That said Board of Commissioners and Councils of said City of San Antonio, do hereby certify that the original plat as the same appears on file in the office of the City Engineer of said City of San Antonio, do hereby certify that the following is a true and correct copy of the original plat as the same appears on file in the office of the City Engineer of said City of San Antonio, to-wit:

That said Board of Commissioners and Councils of said City of San Antonio, do hereby certify that the original plat as the same appears on file in the office of the City Engineer of said City of San Antonio, to-wit:



The State of Texas, County of Bexar, City of San Antonio, at the Board of Commissioners and Councils of said City of San Antonio, this 22nd day of March, 1909, the said Board of Commissioners and Councils of said City of San Antonio, do hereby certify that the following is a true and correct copy of the original plat as the same appears on file in the office of the City Engineer of said City of San Antonio, to-wit:

That said Board of Commissioners and Councils of said City of San Antonio, do hereby certify that the original plat as the same appears on file in the office of the City Engineer of said City of San Antonio, to-wit:

That said Board of Commissioners and Councils of said City of San Antonio, do hereby certify that the original plat as the same appears on file in the office of the City Engineer of said City of San Antonio, to-wit: