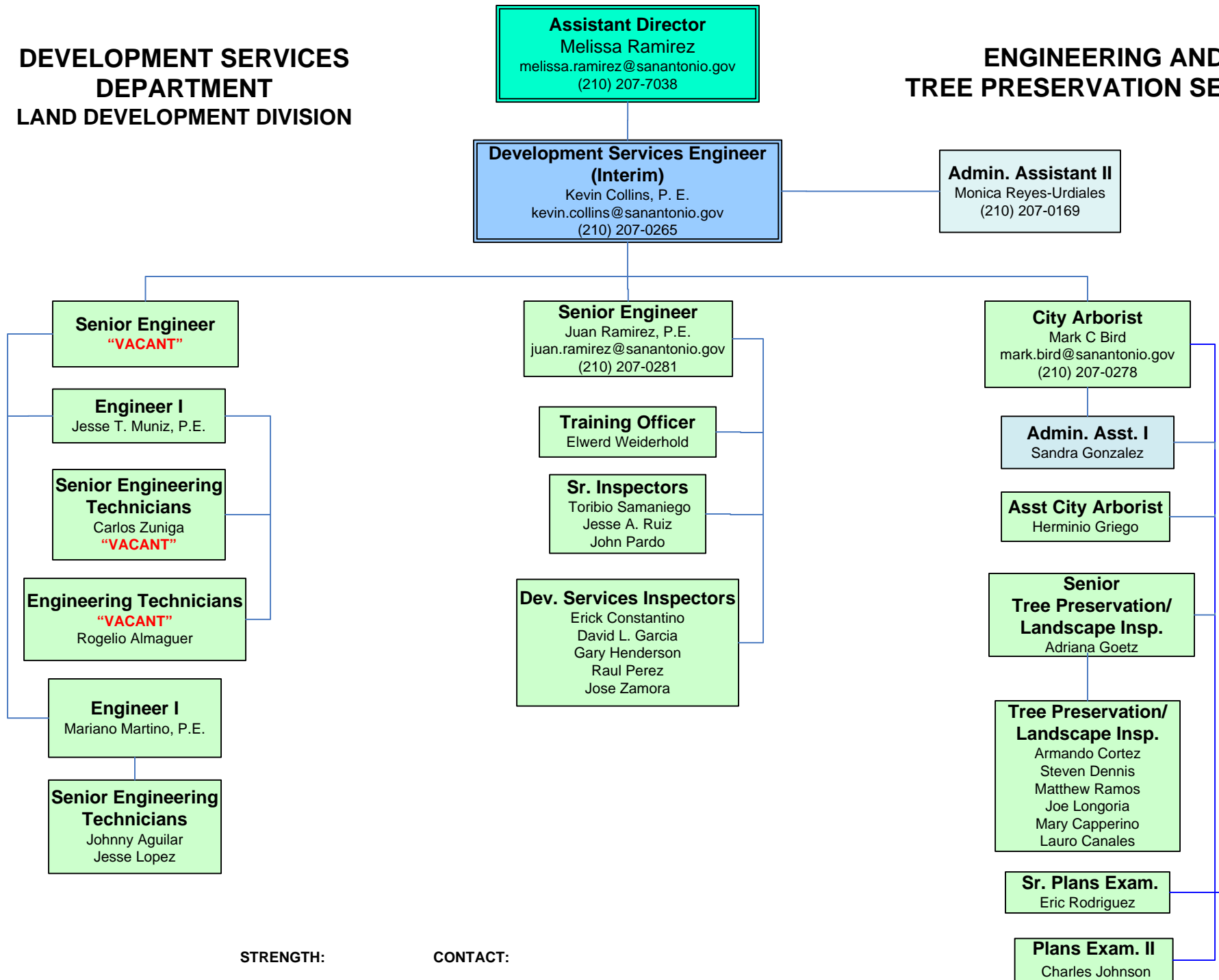


**DEVELOPMENT SERVICES  
DEPARTMENT  
LAND DEVELOPMENT DIVISION**

**ENGINEERING AND  
TREE PRESERVATION SECTION**



**STRENGTH:**

Authorized FTE's	33
Actual FTE's	30
Authorized Temps	0
Actual Temps	0
VACANCIES	3

**CONTACT:**

**LAND DEVELOPMENT  
DIVISION**  
(210) 207-1111  
[www.sanantonio.gov/dsd](http://www.sanantonio.gov/dsd)